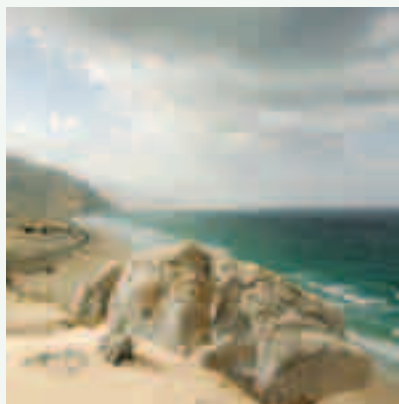


TIDE TABLES FEBRUARY 2007

KHASAB PORT

The tables are from the Oman Maritime Handbook 2007. Published by the National Hydrographic Office, Royal Navy of Oman

| Day | Time | Height in metres |
|--------|-------|------------------|
| Day 1 | 04.38 | 1.1 Low |
| Day 1 | 09.58 | 2.3 High |
| Day 1 | 17.01 | 0.2 Low |
| Day 1 | 23.14 | 2.3 High |
| Day 2 | 05.18 | 1.0 Low |
| Day 2 | 10.43 | 2.4 High |
| Day 2 | 17.38 | 0.2 Low |
| Day 2 | 23.45 | 2.4 High |
| Day 3 | 05.51 | 0.9 Low |
| Day 3 | 11.22 | 2.4 High |
| Day 3 | 18.10 | 0.3 Low |
| – | – | – |
| Day 4 | 00.14 | 2.4 High |
| Day 4 | 06.22 | 0.8 Low |
| Day 4 | 11.57 | 2.3 High |
| Day 4 | 18.38 | 0.5 Low |
| Day 5 | 00.40 | 2.4 High |
| Day 5 | 06.51 | 0.8 Low |
| Day 5 | 12.29 | 2.3 High |
| Day 5 | 19.03 | 0.6 Low |
| Day 6 | 01.04 | 2.3 High |
| Day 6 | 07.19 | 0.8 Low |
| Day 6 | 13.00 | 2.2 High |
| Day 6 | 19.25 | 0.7 Low |
| Day 7 | 01.27 | 2.3 High |
| Day 7 | 07.47 | 0.8 Low |
| Day 7 | 13.32 | 2.1 High |
| Day 7 | 19.45 | 0.8 Low |
| Day 8 | 01.50 | 2.2 High |
| Day 8 | 08.18 | 0.8 Low |
| Day 8 | 14.07 | 2.0 High |
| Day 8 | 20.04 | 0.9 Low |
| Day 9 | 02.14 | 2.1 High |
| Day 9 | 08.52 | 0.8 Low |
| Day 9 | 14.49 | 1.8 High |
| Day 9 | 20.30 | 1.1 Low |
| Day 10 | 02.41 | 2.1 High |
| Day 10 | 09.39 | 0.8 Low |
| Day 10 | 15.48 | 1.7 High |
| Day 10 | 21.07 | 1.3 Low |
| Day 11 | 03.13 | 2.0 High |
| Day 11 | 10.44 | 0.9 Low |
| Day 11 | 17.26 | 1.7 High |
| Day 11 | 22.04 | 1.4 Low |
| Day 12 | 04.03 | 2.0 High |
| Day 12 | 12.14 | 0.8 Low |
| Day 12 | 19.36 | 1.8 High |
| Day 12 | 23.45 | 1.6 Low |
| Day 13 | 05.36 | 2.0 High |
| Day 13 | 13.40 | 0.7 Low |
| Day 13 | 20.48 | 1.9 High |
| – | – | – |



High tide in Bukha, near Khasab

| Day | Time | Height in metres |
|--------|-------|------------------|
| Day 14 | 01.51 | 1.6 Low |
| Day 14 | 07.15 | 2.0 High |
| Day 14 | 14.45 | 0.6 Low |
| Day 14 | 21.30 | 2.1 High |
| Day 15 | 02.59 | 1.4 Low |
| Day 15 | 08.25 | 2.2 High |
| Day 15 | 15.38 | 0.4 Low |
| Day 15 | 22.03 | 2.3 High |
| Day 16 | 03.47 | 1.3 Low |
| Day 16 | 09.19 | 2.4 High |
| Day 16 | 16.23 | 0.3 Low |
| Day 16 | 22.34 | 2.4 High |
| Day 17 | 04.27 | 1.1 Low |
| Day 17 | 10.07 | 2.6 High |
| Day 17 | 17.03 | 0.2 Low |
| Day 17 | 23.05 | 2.5 High |
| Day 18 | 05.05 | 0.8 Low |
| Day 18 | 10.52 | 2.7 High |
| Day 18 | 17.41 | 0.2 Low |
| Day 18 | 23.37 | 2.5 High |
| Day 19 | 05.43 | 0.6 Low |
| Day 19 | 11.36 | 2.7 High |
| Day 19 | 18.18 | 0.3 Low |
| – | – | – |
| Day 20 | 00.09 | 2.5 High |
| Day 20 | 06.22 | 0.4 Low |
| Day 20 | 12.21 | 2.6 High |
| Day 20 | 18.54 | 0.4 Low |
| Day 21 | 00.43 | 2.5 High |
| Day 21 | 07.04 | 0.3 Low |
| Day 21 | 13.07 | 2.5 High |
| Day 21 | 19.31 | 0.5 Low |

| Day | Time | Height in metres |
|--------|-------|------------------|
| Day 22 | 01.18 | 2.5 High |
| Day 22 | 07.50 | 0.3 Low |
| Day 22 | 13.57 | 2.3 High |
| Day 22 | 20.09 | 0.7 Low |
| Day 23 | 01.55 | 2.4 High |
| Day 23 | 08.42 | 0.3 Low |
| Day 23 | 14.54 | 2.0 High |
| Day 23 | 20.53 | 0.9 Low |
| Day 24 | 02.38 | 2.2 High |
| Day 24 | 09.45 | 0.4 Low |
| Day 24 | 16.10 | 1.8 High |
| Day 24 | 21.50 | 1.1 Low |
| Day 25 | 03.31 | 2.1 High |
| Day 25 | 11.08 | 0.5 Low |
| Day 25 | 18.04 | 1.7 High |
| Day 25 | 23.19 | 1.3 Low |
| Day 26 | 04.47 | 1.9 High |
| Day 26 | 12.50 | 0.5 Low |
| Day 26 | 19.59 | 1.8 High |
| – | – | – |
| Day 27 | 01.25 | 1.3 Low |
| Day 27 | 06.36 | 1.9 High |
| Day 27 | 14.16 | 0.4 Low |
| Day 27 | 21.04 | 1.9 High |
| Day 28 | 02.52 | 1.2 Low |
| Day 28 | 08.08 | 2.0 High |
| Day 28 | 15.19 | 0.4 Low |
| Day 28 | 21.45 | 2.1 High |

TIDE TABLES FEBRUARY 2007

PORT SULTAN QABOOS, MUSCAT

| Day | Time | Height in metres |
|-------|-------|------------------|
| Day 1 | 03.08 | 1.5 Low |
| Day 1 | 07.18 | 1.8 High |
| Day 1 | 14.51 | 0.4 Low |
| Day 1 | 22.22 | 1.9 High |
| Day 2 | 03.40 | 1.5 Low |
| Day 2 | 08.07 | 1.8 High |
| Day 2 | 15.23 | 0.4 Low |
| Day 2 | 22.43 | 1.9 High |
| Day 3 | 04.12 | 1.4 Low |
| Day 3 | 08.51 | 1.7 High |
| Day 3 | 15.50 | 0.5 Low |
| Day 3 | 23.01 | 1.9 High |
| Day 4 | 04.43 | 1.3 Low |
| Day 4 | 09.33 | 1.7 High |
| Day 4 | 16.14 | 0.6 Low |
| Day 4 | 23.17 | 1.9 High |
| Day 5 | 05.15 | 1.2 Low |
| Day 5 | 10.15 | 1.6 High |
| Day 5 | 16.36 | 0.8 Low |
| Day 5 | 23.31 | 1.9 High |
| Day 6 | 05.49 | 1.1 Low |
| Day 6 | 11.00 | 1.5 High |
| Day 6 | 16.55 | 0.9 Low |
| Day 6 | 23.44 | 1.9 High |
| Day 7 | 06.25 | 1.0 Low |
| Day 7 | 11.53 | 1.4 High |
| Day 7 | 17.12 | 1.0 Low |
| Day 7 | 23.57 | 1.9 High |
| Day 8 | 07.06 | 0.9 Low |
| Day 8 | 13.05 | 1.3 High |
| Day 8 | 17.23 | 1.2 Low |
| - | - | - |

| Day | Time | Height in metres |
|--------|-------|------------------|
| Day 9 | 00.10 | 1.9 High |
| Day 9 | 07.53 | 0.9 Low |
| Day 9 | 15.12 | 1.3 High |
| Day 9 | 17.13 | 1.3 High |
| Day 10 | 00.24 | 1.8 High |
| Day 10 | 08.51 | 0.8 Low |
| - | - | - |
| - | - | - |
| Day 11 | 00.39 | 1.8 High |
| Day 11 | 09.57 | 0.7 Low |
| - | - | - |
| - | - | - |
| Day 12 | 00.58 | 1.8 High |
| Day 12 | 11.02 | 0.6 Low |
| - | - | - |
| - | - | - |
| Day 13 | 01.28 | 1.8 High |
| Day 13 | 12.01 | 0.6 Low |
| Day 13 | 21.39 | 1.8 High |
| - | - | - |
| Day 14 | 01.22 | 1.7 High |
| Day 14 | 03.28 | 1.7 High |
| Day 14 | 12.51 | 0.5 Low |
| Day 14 | 21.18 | 1.8 High |
| Day 15 | 01.56 | 1.6 Low |
| Day 15 | 05.19 | 1.7 High |
| Day 15 | 13.36 | 0.4 Low |
| Day 15 | 21.26 | 1.9 High |
| Day 16 | 02.28 | 1.5 Low |
| Day 16 | 06.40 | 1.8 High |
| Day 16 | 14.17 | 0.4 Low |
| Day 16 | 21.41 | 1.9 High |

| Day | Time | Height in metres |
|--------|-------|------------------|
| Day 17 | 03.04 | 1.4 Low |
| Day 17 | 07.46 | 1.8 High |
| Day 17 | 14.54 | 0.4 Low |
| Day 17 | 22.00 | 2.0 High |
| Day 18 | 03.43 | 1.2 Low |
| Day 18 | 08.47 | 1.8 High |
| Day 18 | 15.29 | 0.5 Low |
| Day 18 | 22.21 | 2.0 High |
| Day 19 | 04.25 | 1.0 Low |
| Day 19 | 09.47 | 1.8 High |
| Day 19 | 16.02 | 0.6 Low |
| Day 19 | 22.43 | 2.1 High |
| Day 20 | 05.09 | 0.9 Low |
| Day 20 | 10.50 | 1.7 High |
| Day 20 | 16.33 | 0.8 Low |
| Day 20 | 23.06 | 2.1 High |
| Day 21 | 05.55 | 0.7 Low |
| Day 21 | 12.01 | 1.6 High |
| Day 21 | 17.03 | 1.1 Low |
| Day 21 | 23.30 | 2.1 High |
| Day 22 | 06.45 | 0.6 Low |
| Day 22 | 13.28 | 1.5 High |
| Day 22 | 17.29 | 1.3 Low |
| Day 22 | 23.55 | 2.1 High |
| Day 23 | 07.40 | 0.5 Low |
| Day 23 | 15.18 | 1.5 High |
| Day 23 | 17.47 | 1.4 Low |
| - | - | - |
| Day 24 | 00.22 | 2.0 High |
| Day 24 | 08.46 | 0.6 Low |
| - | - | - |
| - | - | - |
| Day 25 | 00.51 | 1.9 High |
| Day 25 | 10.03 | 0.6 Low |
| - | - | - |
| - | - | - |
| Day 26 | 01.31 | 1.8 High |
| Day 26 | 11.22 | 0.6 Low |
| Day 26 | 20.38 | 1.8 High |
| Day 26 | 01.11 | 1.6 Low |
| Day 27 | 03.20 | 1.7 High |
| Day 27 | 12.28 | 0.6 Low |
| Day 27 | 20.43 | 1.8 High |
| - | - | - |
| Day 28 | 01.54 | 1.5 Low |
| Day 28 | 05.21 | 1.6 High |
| Day 28 | 13.18 | 0.6 Low |
| Day 28 | 21.00 | 1.8 High |



Waterfront curves around the *corniche*

TIDE TABLES FEBRUARY 2007

QALHAT LNG TERMINAL

| Day | Time | Height in metres |
|-------|-------|------------------|
| Day 1 | 03.35 | 1.6 Low |
| Day 1 | 08.30 | 2.3 High |
| Day 1 | 15.15 | 0.5 Low |
| Day 1 | 22.14 | 2.8 High |
| Day 2 | 04.10 | 1.5 Low |
| Day 2 | 09.14 | 2.4 High |
| Day 2 | 15.52 | 0.5 Low |
| Day 2 | 22.41 | 2.8 High |
| Day 3 | 04.41 | 1.4 Low |
| Day 3 | 09.53 | 2.4 High |
| Day 3 | 16.24 | 0.6 Low |
| Day 3 | 23.06 | 2.8 High |
| Day 4 | 05.10 | 1.3 Low |
| Day 4 | 10.29 | 2.4 High |
| Day 4 | 16.53 | 0.7 Low |
| Day 4 | 23.29 | 2.8 High |
| Day 5 | 05.39 | 1.2 Low |
| Day 5 | 11.04 | 2.4 High |
| Day 5 | 17.19 | 0.8 Low |
| Day 5 | 23.50 | 2.8 High |
| Day 6 | 06.09 | 1.1 Low |
| Day 6 | 11.40 | 2.3 High |
| Day 6 | 17.44 | 1.0 Low |
| - | - | - |
| Day 7 | 00.10 | 2.8 High |
| Day 7 | 06.39 | 1.0 Low |
| Day 7 | 12.19 | 2.2 High |
| Day 7 | 18.08 | 1.2 Low |
| Day 8 | 00.30 | 2.7 High |
| Day 8 | 07.12 | 1.0 Low |
| Day 8 | 13.04 | 2.1 High |
| Day 8 | 18.31 | 1.4 Low |

| Day | Time | Height in metres |
|--------|-------|------------------|
| Day 9 | 00.50 | 2.6 High |
| Day 9 | 07.50 | 1.0 Low |
| Day 9 | 14.02 | 2.0 High |
| Day 9 | 18.55 | 1.6 Low |
| Day 10 | 01.12 | 2.5 High |
| Day 10 | 08.36 | 1.0 Low |
| Day 10 | 15.32 | 1.9 High |
| Day 10 | 19.22 | 1.8 Low |
| Day 11 | 01.38 | 2.4 High |
| Day 11 | 09.38 | 1.0 Low |
| Day 11 | 18.05 | 2.0 High |
| Day 11 | 20.15 | 2.0 High |
| Day 12 | 02.14 | 2.3 High |
| Day 12 | 10.56 | 0.9 Low |
| Day 12 | 19.39 | 2.2 High |
| Day 12 | 23.17 | 2.1 Low |
| Day 13 | 03.27 | 2.2 High |
| Day 13 | 12.09 | 0.8 Low |
| Day 13 | 20.15 | 2.3 High |
| - | - | - |
| Day 14 | 01.22 | 2.0 Low |
| Day 14 | 05.28 | 2.2 High |
| Day 14 | 13.09 | 0.6 Low |
| Day 14 | 20.45 | 2.5 High |
| Day 15 | 02.14 | 1.8 Low |
| Day 15 | 06.54 | 2.3 High |
| Day 15 | 13.58 | 0.5 Low |
| Day 15 | 21.13 | 2.6 High |
| Day 16 | 02.52 | 1.7 Low |
| Day 16 | 07.55 | 2.4 High |
| Day 16 | 14.43 | 0.4 Low |
| Day 16 | 21.40 | 2.8 High |

| Day | Time | Height in metres |
|--------|-------|------------------|
| Day 17 | 03.27 | 1.5 Low |
| Day 17 | 08.48 | 2.6 High |
| Day 17 | 15.24 | 0.4 Low |
| Day 17 | 22.07 | 2.9 High |
| Day 18 | 04.04 | 1.2 Low |
| Day 18 | 09.37 | 2.7 High |
| Day 18 | 16.04 | 0.4 Low |
| Day 18 | 22.35 | 3.0 High |
| Day 19 | 04.42 | 1.0 Low |
| Day 19 | 10.26 | 2.8 High |
| Day 19 | 16.44 | 0.6 Low |
| Day 19 | 23.03 | 3.0 High |
| Day 20 | 05.21 | 0.7 Low |
| Day 20 | 11.17 | 2.7 High |
| Day 20 | 17.23 | 0.8 Low |
| Day 20 | 23.32 | 3.0 High |
| Day 21 | 06.03 | 0.6 Low |
| Day 21 | 12.10 | 2.6 High |
| Day 21 | 18.04 | 1.0 Low |
| - | - | - |
| Day 22 | 00.03 | 3.0 High |
| Day 22 | 06.47 | 0.5 Low |
| Day 22 | 13.09 | 2.5 High |
| Day 22 | 18.47 | 1.3 Low |
| Day 23 | 00.36 | 2.8 High |
| Day 23 | 07.36 | 0.5 Low |
| Day 23 | 14.19 | 2.3 High |
| Day 23 | 19.36 | 1.6 Low |
| Day 24 | 01.12 | 2.6 High |
| Day 24 | 08.33 | 0.6 Low |
| Day 24 | 15.52 | 2.2 High |
| Day 24 | 20.41 | 1.8 Low |
| Day 25 | 01.55 | 2.4 High |
| Day 25 | 09.46 | 0.8 Low |
| Day 25 | 17.43 | 2.3 High |
| Day 25 | 22.28 | 1.9 Low |
| Day 26 | 02.58 | 2.2 High |
| Day 26 | 11.17 | 0.8 Low |
| Day 26 | 19.09 | 2.4 High |
| - | - | - |
| Day 27 | 00.50 | 1.9 Low |
| Day 27 | 05.06 | 2.1 High |
| Day 27 | 12.39 | 0.8 Low |
| Day 27 | 20.05 | 2.5 High |
| Day 28 | 02.04 | 1.7 Low |
| Day 28 | 06.52 | 2.1 High |
| Day 28 | 13.39 | 0.8 Low |
| Day 28 | 20.44 | 2.6 High |

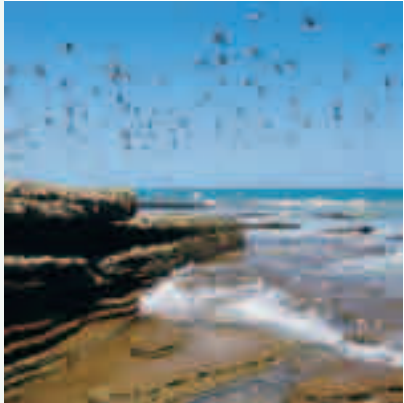


A dhow near Sur, south of Qalhat

TIDE TABLES FEBRUARY 2007

MASIRAH, RAS HILF

| Day | Time | Height in metres |
|--------|-------|------------------|
| Day 1 | 03.43 | 1.6 Low |
| Day 1 | 08.33 | 2.3 High |
| Day 1 | 15.50 | 0.4 Low |
| Day 1 | 22.23 | 2.7 High |
| Day 2 | 04.21 | 1.5 Low |
| Day 2 | 09.19 | 2.4 High |
| Day 2 | 16.22 | 0.4 Low |
| Day 2 | 22.51 | 2.7 High |
| Day 3 | 04.56 | 1.3 Low |
| Day 3 | 09.59 | 2.4 High |
| Day 3 | 16.49 | 0.5 Low |
| Day 3 | 23.17 | 2.7 High |
| Day 4 | 05.29 | 1.2 Low |
| Day 4 | 10.38 | 2.3 High |
| Day 4 | 17.12 | 0.6 Low |
| Day 4 | 23.40 | 2.7 High |
| Day 5 | 05.59 | 1.1 Low |
| Day 5 | 11.16 | 2.2 High |
| Day 5 | 17.34 | 0.8 Low |
| - | - | - |
| Day 6 | 00.02 | 2.7 High |
| Day 6 | 06.30 | 1.0 Low |
| Day 6 | 11.55 | 2.2 High |
| Day 6 | 17.56 | 1.0 Low |
| Day 7 | 00.21 | 2.6 High |
| Day 7 | 07.00 | 1.0 Low |
| Day 7 | 12.36 | 2.1 High |
| Day 7 | 18.20 | 1.2 Low |
| Day 8 | 00.39 | 2.5 High |
| Day 8 | 07.32 | 0.9 Low |
| Day 8 | 13.23 | 2.0 High |
| Day 8 | 18.46 | 1.4 Low |
| Day 9 | 00.58 | 2.5 High |
| Day 9 | 08.09 | 0.9 Low |
| Day 9 | 14.23 | 1.9 High |
| Day 9 | 19.14 | 1.5 Low |
| Day 10 | 01.21 | 2.4 High |
| Day 10 | 08.55 | 0.9 Low |
| Day 10 | 16.06 | 1.9 High |
| Day 10 | 19.45 | 1.7 Low |
| Day 11 | 01.49 | 2.3 High |
| Day 11 | 09.54 | 0.9 Low |
| Day 11 | 18.36 | 1.9 High |
| Day 11 | 20.36 | 1.9 High |
| Day 12 | 02.30 | 2.2 High |
| Day 12 | 11.13 | 0.9 Low |
| Day 12 | 19.57 | 2.1 High |
| Day 12 | 23.42 | 2.0 Low |
| Day 13 | 03.38 | 2.1 High |
| Day 13 | 12.36 | 0.7 Low |
| Day 13 | 20.32 | 2.3 High |
| - | - | - |



The tide rushes in at Ras ar Ruways, north of Masirah

| Day | Time | Height in metres |
|--------|-------|------------------|
| Day 14 | 01.49 | 1.9 Low |
| Day 14 | 05.26 | 2.1 High |
| Day 14 | 13.40 | 0.6 Low |
| Day 14 | 21.00 | 2.4 High |
| Day 15 | 02.39 | 1.8 Low |
| Day 15 | 07.02 | 2.2 High |
| Day 15 | 14.29 | 0.4 Low |
| Day 15 | 21.26 | 2.6 High |
| Day 16 | 03.19 | 1.6 Low |
| Day 16 | 08.08 | 2.3 High |
| Day 16 | 15.12 | 0.3 Low |
| Day 16 | 21.52 | 2.7 High |
| Day 17 | 03.58 | 1.4 Low |
| Day 17 | 09.02 | 2.5 High |
| Day 17 | 15.51 | 0.3 Low |
| Day 17 | 22.20 | 2.9 High |
| Day 18 | 04.37 | 1.2 Low |
| Day 18 | 09.52 | 2.6 High |
| Day 18 | 16.28 | 0.4 Low |
| Day 18 | 22.47 | 3.0 High |
| Day 19 | 05.16 | 1.0 Low |
| Day 19 | 10.42 | 2.6 High |
| Day 19 | 17.04 | 0.6 Low |
| Day 19 | 23.16 | 3.0 High |
| Day 20 | 05.57 | 0.7 Low |
| Day 20 | 11.33 | 2.6 High |
| Day 20 | 17.41 | 0.8 Low |
| Day 20 | 23.46 | 3.0 High |
| Day 21 | 06.38 | 0.6 Low |
| Day 21 | 12.27 | 2.5 High |
| Day 21 | 18.18 | 1.1 Low |
| - | - | - |

| Day | Time | Height in metres |
|--------|-------|------------------|
| Day 22 | 00.17 | 3.0 High |
| Day 22 | 07.21 | 0.5 Low |
| Day 22 | 13.27 | 2.4 High |
| Day 22 | 18.56 | 1.4 Low |
| Day 23 | 00.49 | 2.9 High |
| Day 23 | 08.08 | 0.5 Low |
| Day 23 | 14.40 | 2.2 High |
| Day 23 | 19.40 | 1.7 Low |
| Day 24 | 01.24 | 2.7 High |
| Day 24 | 09.03 | 0.6 Low |
| Day 24 | 16.16 | 2.2 High |
| Day 24 | 20.37 | 1.9 Low |
| Day 25 | 02.07 | 2.5 High |
| Day 25 | 10.15 | 0.8 Low |
| Day 25 | 18.07 | 2.2 High |
| Day 25 | 22.39 | 2.0 Low |
| Day 26 | 03.06 | 2.3 High |
| Day 26 | 11.48 | 0.8 Low |
| Day 26 | 19.31 | 2.3 High |
| - | - | - |
| Day 27 | 00.52 | 1.9 Low |
| Day 27 | 04.50 | 2.2 High |
| Day 27 | 13.10 | 0.8 Low |
| Day 27 | 20.22 | 2.4 High |
| Day 28 | 02.03 | 1.8 Low |
| Day 28 | 06.37 | 2.2 High |
| Day 28 | 14.09 | 0.7 Low |
| Day 28 | 20.58 | 2.5 High |

TIDE TABLES FEBRUARY 2007

PORT SALALAH

| Day | Time | Height in metres |
|-------|-------|------------------|
| Day 1 | 03.08 | 1.5 Low |
| Day 1 | 07.18 | 1.8 High |
| Day 1 | 14.51 | 0.4 Low |
| Day 1 | 22.22 | 1.9 High |
| Day 2 | 03.40 | 1.5 Low |
| Day 2 | 08.07 | 1.8 High |
| Day 2 | 15.23 | 0.4 Low |
| Day 2 | 22.43 | 1.9 High |
| Day 3 | 04.12 | 1.4 Low |
| Day 3 | 08.51 | 1.7 High |
| Day 3 | 15.50 | 0.5 Low |
| Day 3 | 23.01 | 1.9 High |
| Day 4 | 04.43 | 1.3 Low |
| Day 4 | 09.33 | 1.7 High |
| Day 4 | 16.14 | 0.6 Low |
| Day 4 | 23.17 | 1.9 High |
| Day 5 | 05.15 | 1.2 Low |
| Day 5 | 10.15 | 1.6 High |
| Day 5 | 16.36 | 0.8 Low |
| Day 5 | 23.31 | 1.9 High |
| Day 6 | 05.49 | 1.1 Low |
| Day 6 | 11.00 | 1.5 High |
| Day 6 | 16.55 | 0.9 Low |
| Day 6 | 23.44 | 1.9 High |
| Day 7 | 06.25 | 1.0 Low |
| Day 7 | 11.53 | 1.4 High |
| Day 7 | 17.12 | 1.0 Low |
| Day 7 | 23.57 | 1.9 High |
| Day 8 | 07.06 | 0.9 Low |
| Day 8 | 13.05 | 1.3 High |
| Day 8 | 17.23 | 1.2 Low |
| - | - | - |

| Day | Time | Height in metres |
|--------|-------|------------------|
| Day 9 | 00.10 | 1.9 High |
| Day 9 | 07.53 | 0.9 Low |
| Day 9 | 15.12 | 1.3 High |
| Day 9 | 17.13 | 1.3 High |
| Day 10 | 00.24 | 1.8 High |
| Day 10 | 08.51 | 0.8 Low |
| - | - | - |
| Day 11 | 00.39 | 1.8 High |
| Day 11 | 09.57 | 0.7 Low |
| - | - | - |
| Day 12 | 00.58 | 1.8 High |
| Day 12 | 11.02 | 0.6 Low |
| - | - | - |
| Day 13 | 01.28 | 1.8 High |
| Day 13 | 12.01 | 0.6 Low |
| Day 13 | 21.39 | 1.8 High |
| - | - | - |
| Day 14 | 01.22 | 1.7 High |
| Day 14 | 03.28 | 1.7 High |
| Day 14 | 12.51 | 0.5 Low |
| Day 14 | 21.18 | 1.8 High |
| Day 15 | 01.56 | 1.6 Low |
| Day 15 | 05.19 | 1.7 High |
| Day 15 | 13.36 | 0.4 Low |
| Day 15 | 21.26 | 1.9 High |
| Day 16 | 02.28 | 1.5 Low |
| Day 16 | 06.40 | 1.8 High |
| Day 16 | 14.17 | 0.4 Low |
| Day 16 | 21.41 | 1.9 High |

| Day | Time | Height in metres |
|--------|-------|------------------|
| Day 17 | 03.04 | 1.4 Low |
| Day 17 | 07.46 | 1.8 High |
| Day 17 | 14.54 | 0.4 Low |
| Day 17 | 22.00 | 2.0 High |
| Day 18 | 03.43 | 1.2 Low |
| Day 18 | 08.47 | 1.8 High |
| Day 18 | 15.29 | 0.5 Low |
| Day 18 | 22.21 | 2.0 High |
| Day 19 | 04.25 | 1.0 Low |
| Day 19 | 09.47 | 1.8 High |
| Day 19 | 16.02 | 0.6 Low |
| Day 19 | 22.43 | 2.1 High |
| Day 20 | 05.09 | 0.9 Low |
| Day 20 | 10.50 | 1.7 High |
| Day 20 | 16.33 | 0.8 Low |
| Day 20 | 23.06 | 2.1 High |
| Day 21 | 05.55 | 0.7 Low |
| Day 21 | 12.01 | 1.6 High |
| Day 21 | 17.03 | 1.1 Low |
| Day 21 | 23.30 | 2.1 High |
| Day 22 | 06.45 | 0.6 Low |
| Day 22 | 13.28 | 1.5 High |
| Day 22 | 17.29 | 1.3 Low |
| Day 22 | 23.55 | 2.1 High |
| Day 23 | 07.40 | 0.5 Low |
| Day 23 | 15.18 | 1.5 High |
| Day 23 | 17.47 | 1.4 Low |
| - | - | - |
| Day 24 | 00.22 | 2.0 High |
| Day 24 | 08.46 | 0.6 Low |
| - | - | - |
| Day 25 | 00.51 | 1.9 High |
| Day 25 | 10.03 | 0.6 Low |
| - | - | - |
| Day 26 | 01.31 | 1.8 High |
| Day 26 | 11.22 | 0.6 Low |
| Day 26 | 20.38 | 1.8 High |
| - | - | - |
| Day 27 | 01.11 | 1.6 Low |
| Day 27 | 03.20 | 1.7 High |
| Day 27 | 12.28 | 0.6 Low |
| Day 27 | 20.43 | 1.8 High |
| Day 28 | 01.54 | 1.5 Low |
| Day 28 | 05.21 | 1.6 High |
| Day 28 | 13.18 | 0.6 Low |
| Day 28 | 21.00 | 1.8 High |



The wild shores of Hasik, east of Salalah